

PROJECT GALLERY 90

'WITH LIGHT'

Works by

Elena Larkin

2022 Catalogue

For enquiries contact:

Kate Hopkinson Pointer

info@projectgallery90.com

0402 144 350

All artworks shown in this catalogue are subject to availability

Artist's Statement:

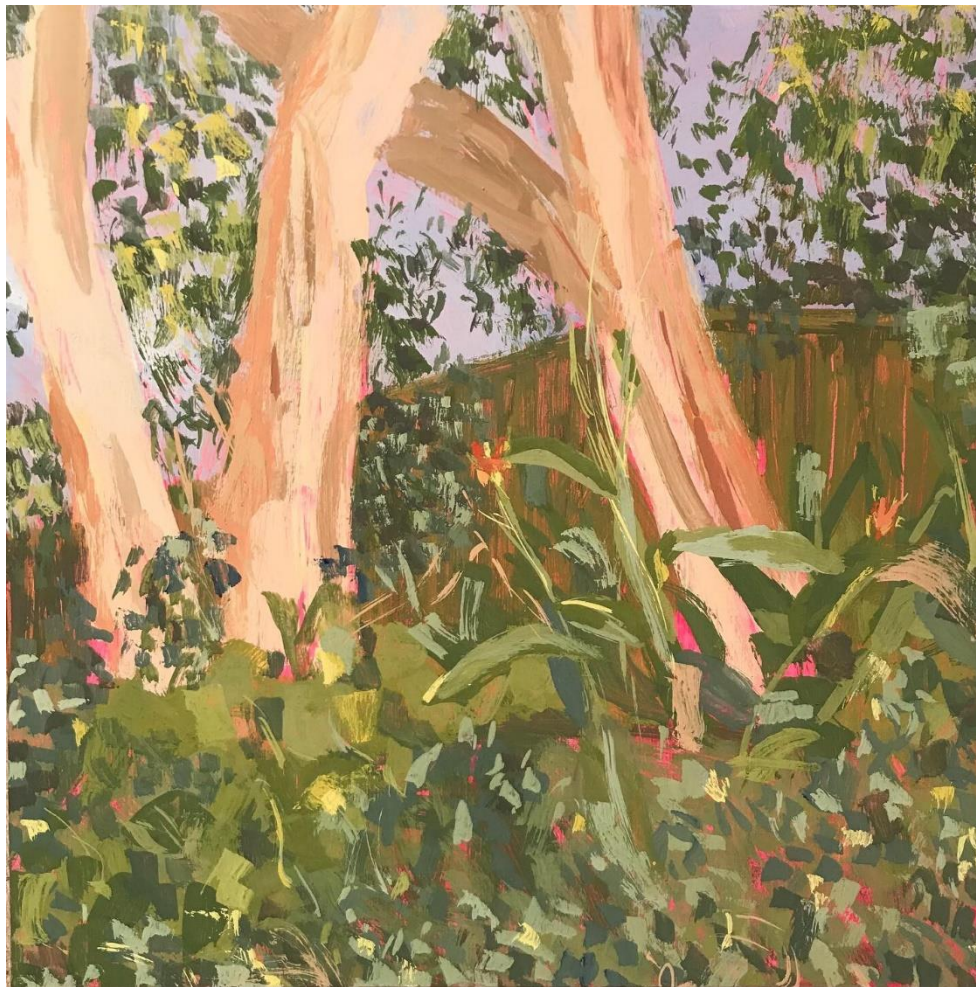
WITH LIGHT

This body of work was created in 2021 and early 2022 on the unceded lands of the Gadigal, Wiradjuri and Bundjalung peoples. I pay my respects to their Elders, past, present and emerging. I am humbled to paint in this beautiful country, and feel inspired by First Nations peoples' deep connection to the land.

Usually choosing to work outside with the tickling grass, risk of rain or dancing sun, the experience of plein air painting fills me with a profound sense of love and awe for the earth we share with other species. During lockdown in Sydney last year, my focus turned inwards, limited to the parameters of my apartment. Here, I found solace with flowers and the pictures on my walls. Painting by the window, I found I could still delight in the play of light.

'With light' is a collection of works created both outside in the open air and inside four walls. It is a celebration of our connection with others on earth, and the joy of discovering this feeling of connection; through a painting from the past, flowers from someone you love faraway, the magpie singing on the balcony or the trees swaying high above and the sun on your skin.

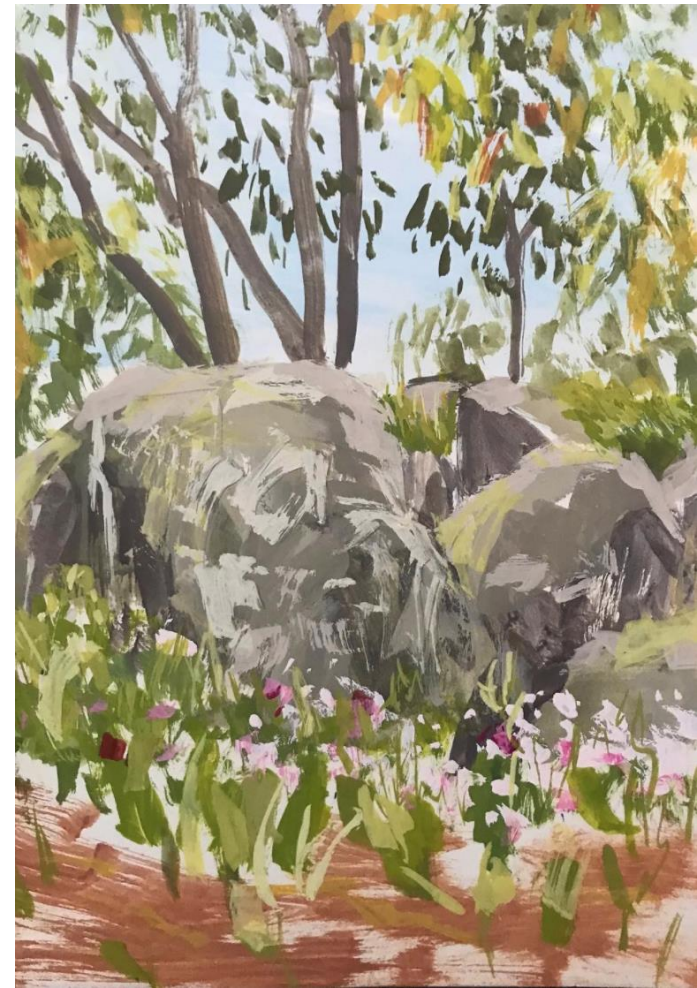
- Elena Larkin



'The park is happy' gouache on board 30x30cm framed \$550



'Sunset at Newnes' gouache on board 20x20cm
framed \$390



'Quick sticks' gouache on paper 29.7x21cm \$370



'Playing in Camperdown cemetery' gouache on paper 29.7x42cm \$550



'Friends in the park Marrickville' gouache on paper 29.7x42cm \$550



'Sundown by Goolayyari' gouache on paper 29.7x42cm \$550



'Rainy day with the mountains' gouache on paper 29.7x42cm \$550



'Planted as power lines or still swaying with roots beneath pavement these tree bodies play music for everyone and also for none' gouache on paper 29.7x42cm \$550



'Midday gone cray' gouache on paper 29.7x42cm \$550



'Proteas in big pink pot with Monet' gouache on paper 61x46cm \$850



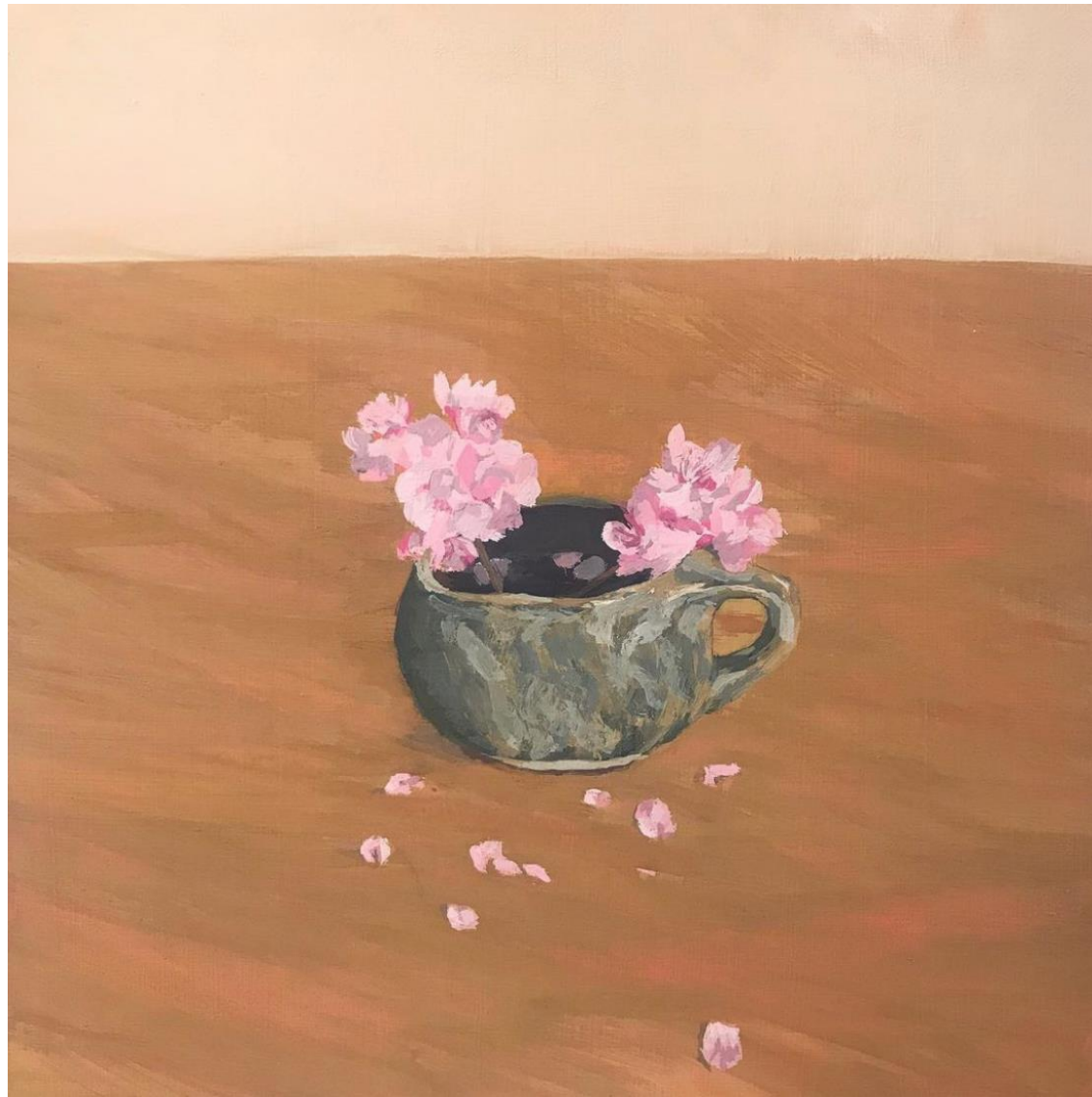
'Bathroom with Lady Valentine and Albert Namatjira postcard' gouache on paper 46x61cm \$700



'Sunflowers for a rainy day (with Fred Williams)' gouache on paper 61x46cm \$700



'Magnolias from a walk in lockdown' gouache on board
30x20cm framed \$490



'Flowers in Pips little cup' gouache on board 40x40cm framed \$550



'Birthday blooms with Degas' gouache on paper 61x46cm framed \$1,090



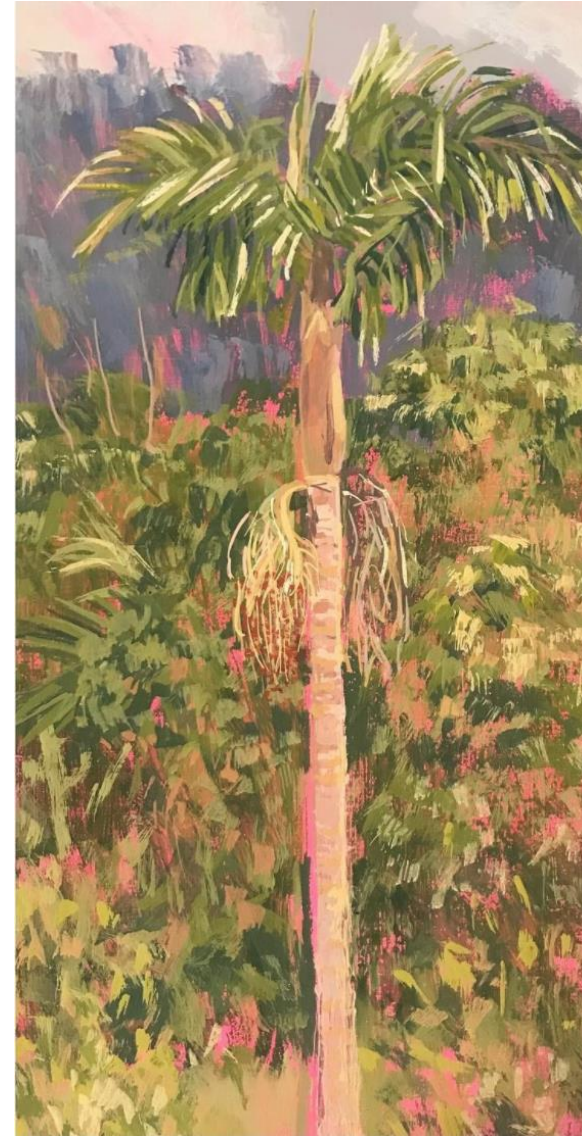
'Have a happy day with flowers Love Mum w Clarice Beckett card' gouache on paper 42x29.7cm \$550



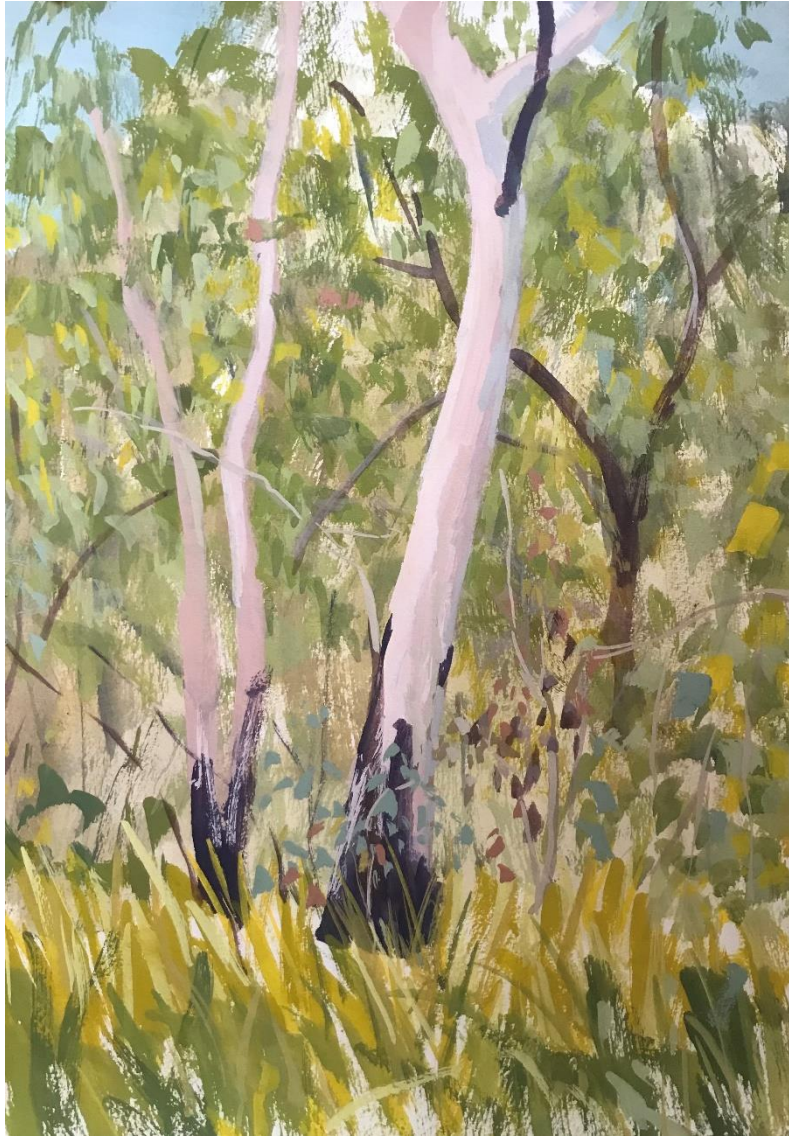
'Fading day Bundjalung land' gouache on board 40x40cm framed \$850



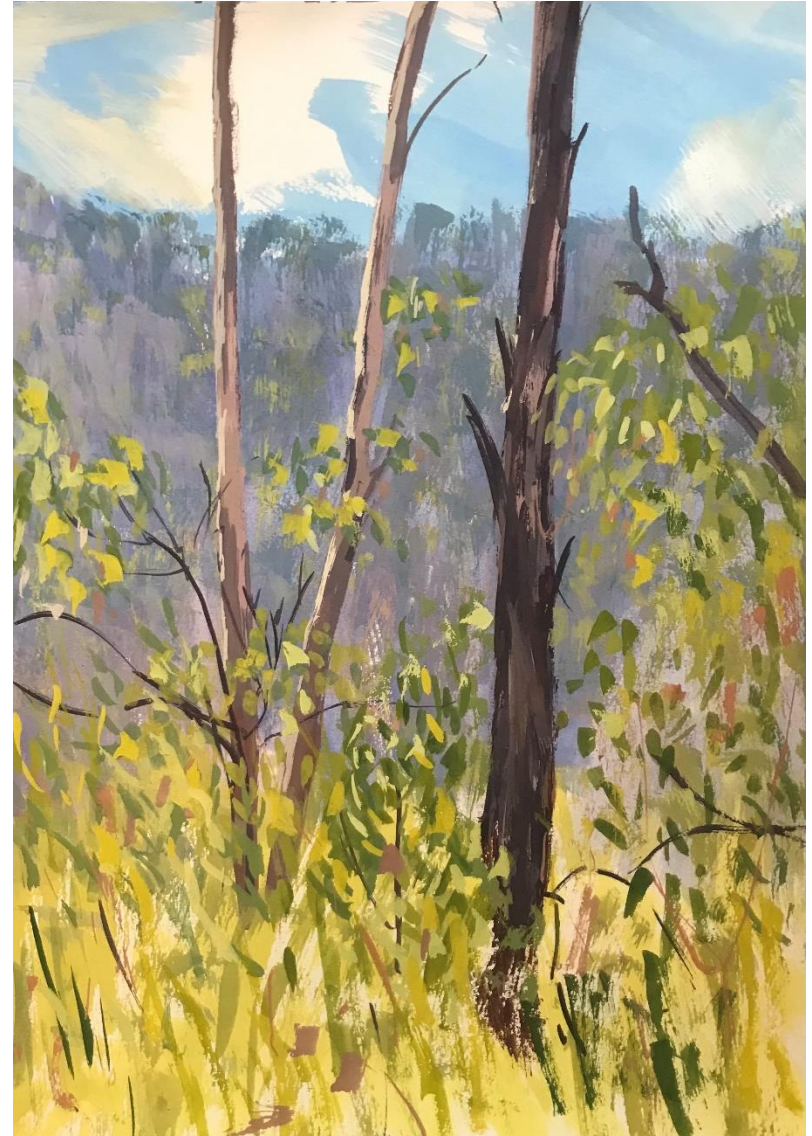
'Feeling positive' gouache on board 40x20cm
framed \$590



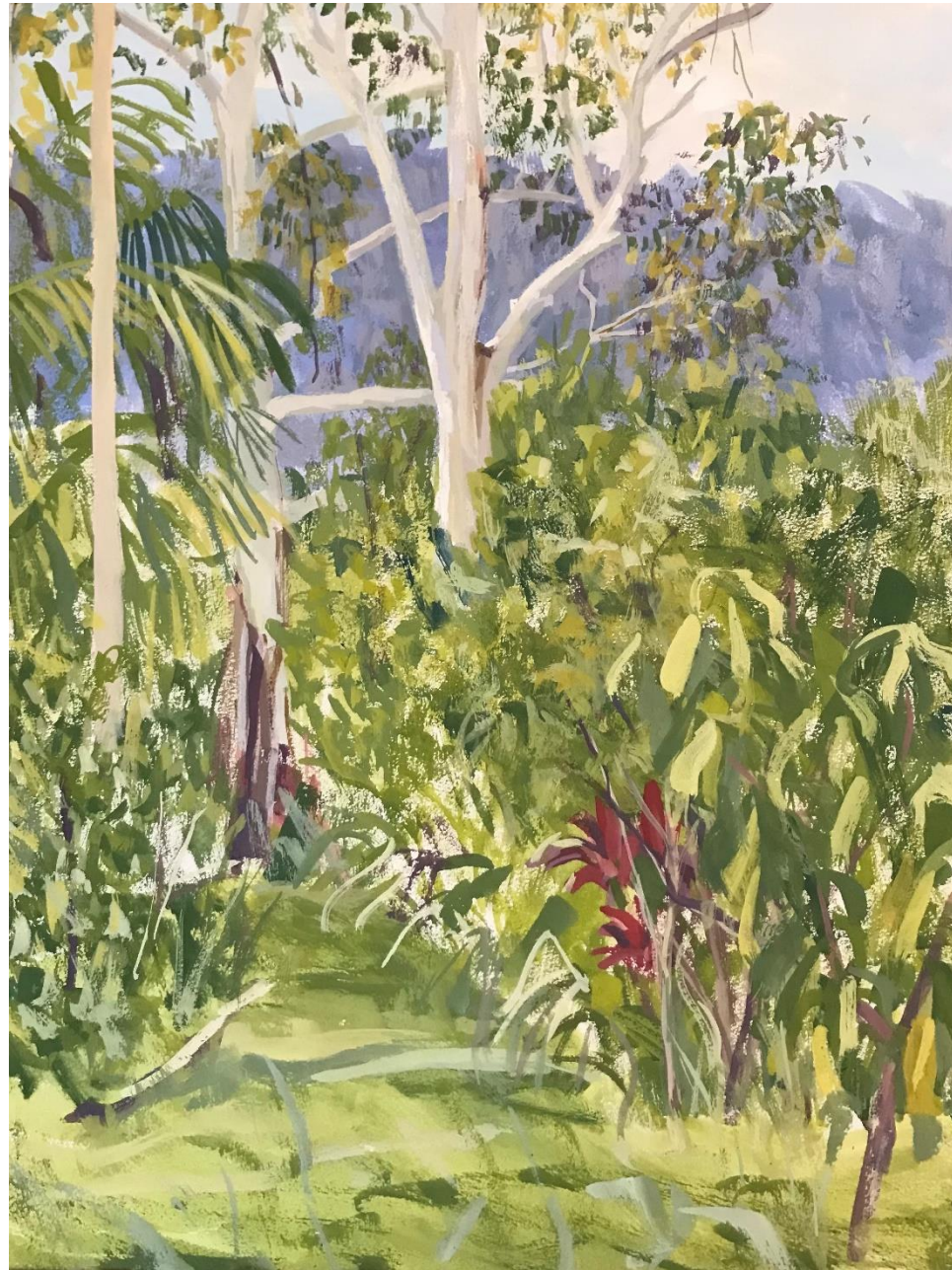
'Cloudy day sun sneaking' gouache on
board 40x20cm framed \$590



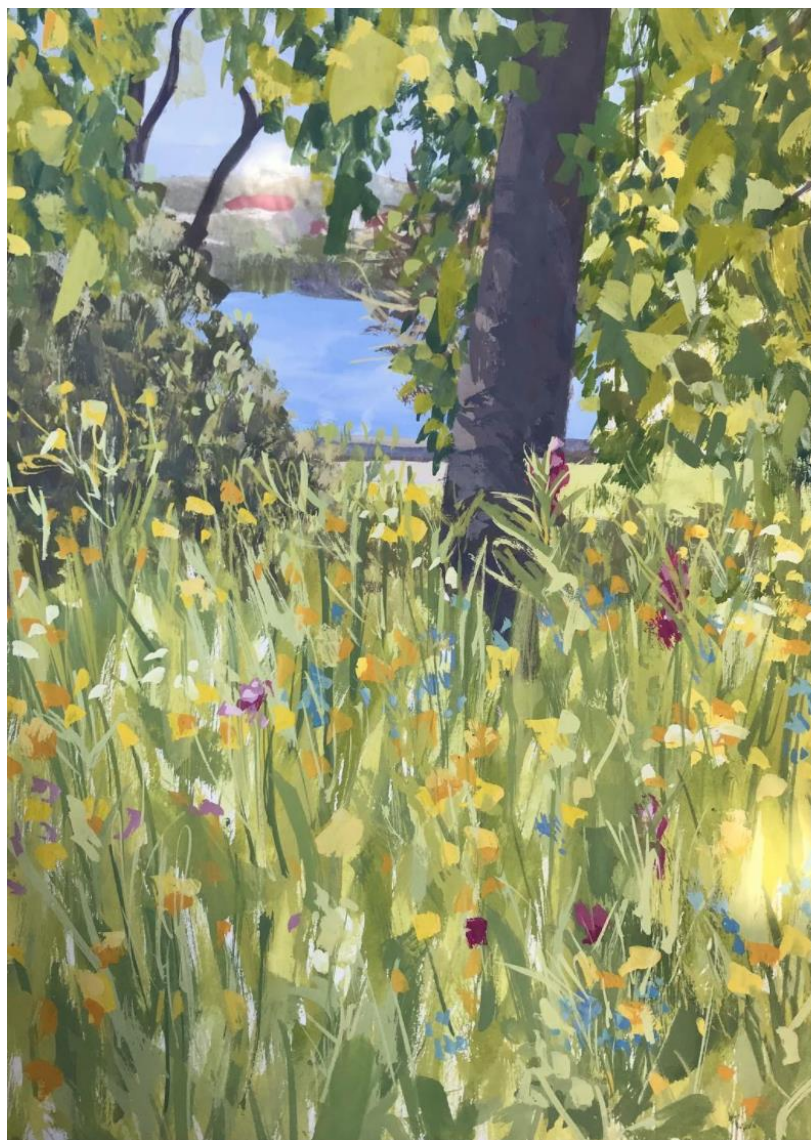
'Bush songs Wiradjuri country' gouache on paper
42x29.7cm \$550



'Bush Songs II' gouache on paper 42x29.7cm \$550



'Blue Hills with squawking white cockatoos' gouache on paper 61x46 \$850



'Amongst the flowers on Gadigal land' gouache on paper
42x29.7cm framed \$750



'Bangalow palms in the morning' gouache on paper 29.7x42cm framed \$750



'Watching rocks in the gardens Gadigal land' gouache on paper 29.7x42cm \$550

For enquiries contact: info@projectgallery90.com
Kate Hopkinson Pointer 0402 144 350

All artworks shown in this catalogue are subject to availability

Project Gallery 90®

90 Oxford St. PADDINGTON NSW .