

PROJECT GALLERY 90

'PERFECT IMPERFECT'

Works by

Jessica Guthrie

2020 Catalogue

For enquiries contact:
Kate Hopkinson-Pointer

info@projectgallery90.com
0402 144 350

All artworks shown in this catalogue are subject to availability

Jessica Guthrie

Artist's statement:

"Ideally isolation is a perfect time for artists to freely create, however coupled with schooling children from home, and timetables awry, it became an unsettling time of unusual constraints and rigidity for myself.

Throughout my paintings I have used geometric patterns and domesticity employed as visual metaphors for the constraints that I felt through isolation, the still life scenes are juxtaposed with flora and fauna creeping into the narrative to express creative thought.

During this time period I decided to intuitively lean into my feelings and accept the stop/start of creative pursuits amongst demands of home duties, embracing the imperfect."



'Growth in Steps'; oil on linen, oak framed, 79x63cm, \$1,950



'Counterpose'; oil on linen, oak framed, 53x43cm, \$1,100



'Protea on Geo Fabric'; oil on board, oak framed 43x43cm, \$890



'Kilter'; oil on board, oak framed, 43x43cm, \$890



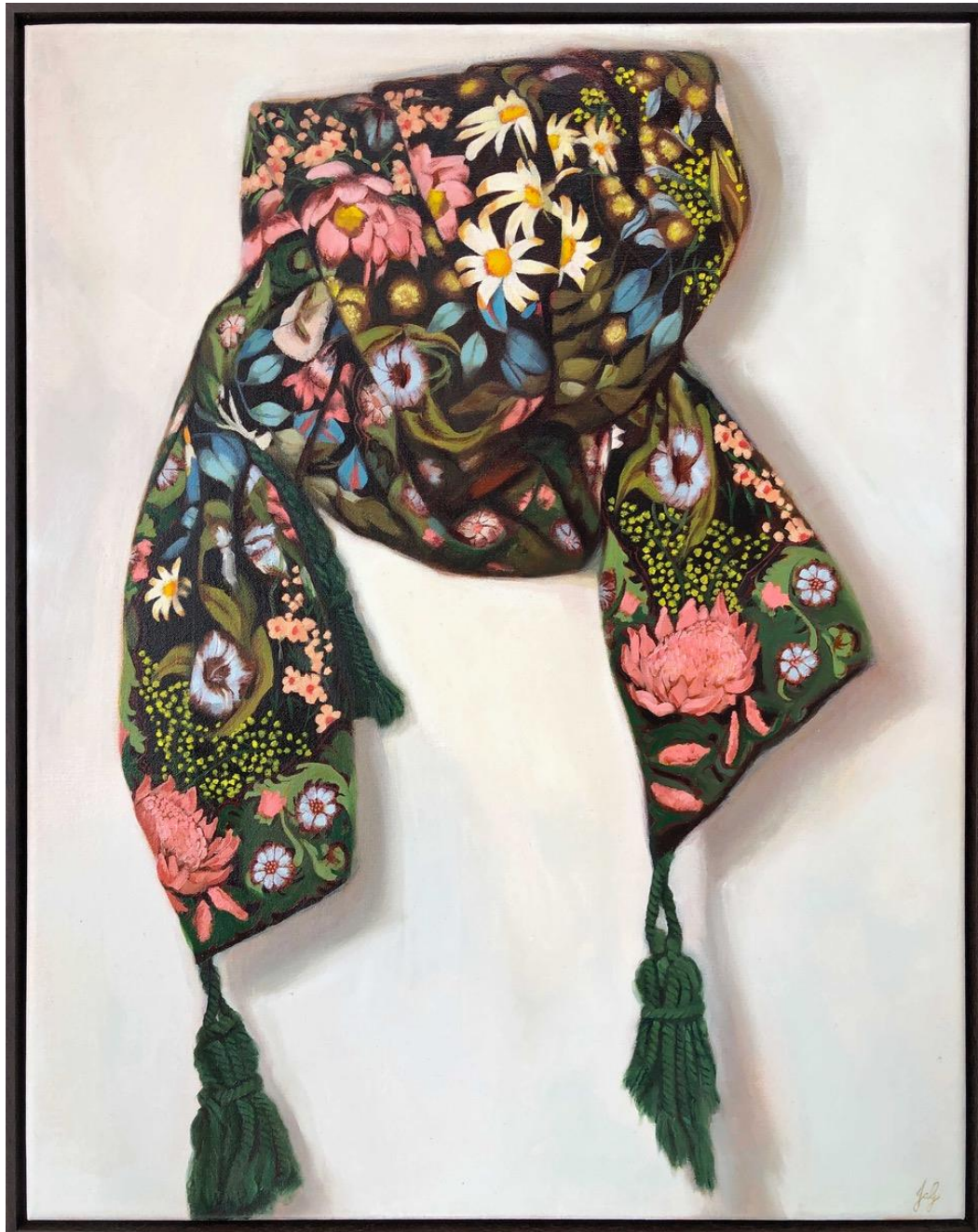
'Bottlebrush on Geo balance'; oil on board, oak framed, 63x63cm, \$1,890



'Perfect Imperfect'; oil on board, oak framed, 63x63cm, \$1,890



'Spider, feminine, creative, patience, strength'; oil on board, framed, 82.5x62.5cm, \$2,600



'Entangled'; oil on linen, framed, 78.5x62.5cm, \$1,950



'Faint Intuition'; oil on linen, framed, 38x33cm, \$1,200



'Moments of Mindfulness'; oil on linen, oak framed, 28.5x28.5cm, \$650



'Solace'; oil on linen, oak framed, 28.5x28.5cm, \$650



'Repose'; oil on linen, oak framed, 28.5x28.5cm, \$650



'Flow'; oil on linen' oak framed, 28.5x28.5cm, \$650



'Hamper'; oil on linen, oak framed, 28.5x28.5cm, \$650

For enquiries contact:
Kate Hopkinson-Pointer

info@projectgallery90.com
0402 144 350

All artworks shown in this catalogue are subject to availability

Project Gallery 90© 2020

90 Oxford St. PADDINGTON NSW 2021.